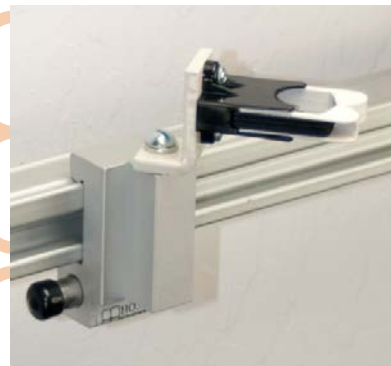




Eclipse™ Horizontal Equipment Management System



Hospital Systems, Inc.—750 Garcia Ave—Pittsburg, CA 94565
phone: 925.427.7800
fax: 925.427.0800
www.HSIheadwalls.com

©HSI 2014

Eclipse™ Horizontal Space Management System



Eclipse™ Horizontal Equipment Rail
#050453

Eclipse™ Rails accept both Clamp-On and Rapid Mount Brackets.

Please specify length at time of order
050453-XX
xx= length
Example 050453-24 is a 24" long rail

'F' Type Eclipse™ Horizontal Equipment Rail
#050469

'F' Type Eclipse™ Rails accept Clamp-On Brackets. Laminate Insert is Satin Oxide. Standard, Premium or Wood Grain laminates are available but may incur additional cost.

Please specify length at time of order
050469-XX
xx= length
Example 050469-48 is a 48" long rail



Clamp-On Bracket
178209



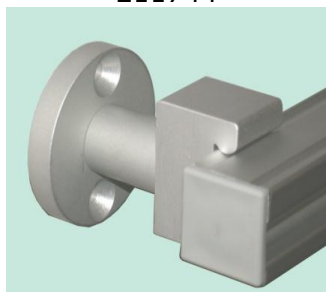
Rapid Mount Bracket
211744



Adapter Bracket
178210



Low Profile (1-5/8") Wall Mount
048301



High Profile (4-3/4") Wall Mount
048300



Unimount Rail Mount
048304



Eclipse™ Horizontal Equipment Rail Storage Solutions Rapid Mount



Utility Basket 10" x 5" x 4"
#611054

Utility Basket 10" x 8" x 4"
#611084

Utility Basket 10" x 8" x 7"
#611087

Utility Basket 16" x 5" x 4"
#611154

Utility Basket 16" x 8" x 4"
#611184

Utility Basket 16" x 8" x 7"
#611187



Utility Basket 20" x 5" x 4"
#611254

Utility Basket 20" x 8" x 4"
#611284

Utility Basket 20" x 8" x 7"
#611287

Rigid Shelf 12" x 12"
#612112

Rigid Shelf 14" x 12"
#612114

Rigid Shelf 18" x 12"
#612118

Rigid Shelf 24" x 12"
#612124



For use with Eclipse™ Horizontal Equipment Rail # 050453

Hospital Systems, Inc.—750 Garcia Ave—Pittsburg, CA 94565
phone: 925.427.7800
fax: 925.427.0800
www.HSIheadwalls.com

Eclipse™ Horizontal Equipment Rail Storage Solutions Clamp On



Utility Basket 10" x 5" x 4"
#601054

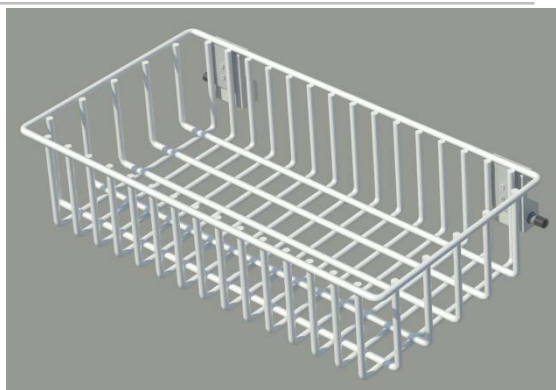
Utility Basket 10" x 8" x 4"
#601084

Utility Basket 10" x 8" x 7"
#601087

Utility Basket 16" x 5" x 4"
#601154

Utility Basket 16" x 8" x 4"
#601184

Utility Basket 16" x 8" x 7"
#601187



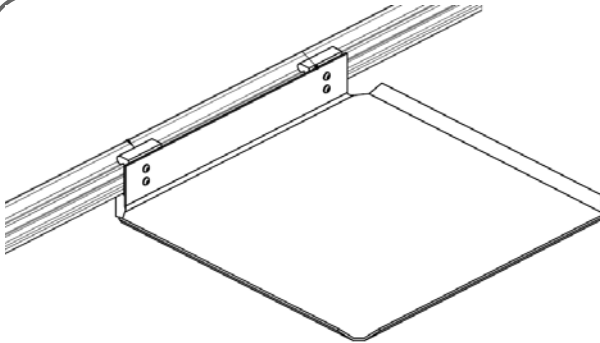
Utility Basket 20" x 5" x 4"
#601254

Utility Basket 20" x 8" x 4"
#601284

Utility Basket 20" x 8" x 7"
#601287

Sphygmomanometer Basket
Clamp On
#606104





Rigid Shelf 12" x 12"
#602112

Rigid Shelf 14" x 12"
#602114

Rigid Shelf 18" x 12"
#602118

Rigid Shelf 24" x 12"
#602124

Drop Down Shelf 25" x 12"
#602425



Fold Down Shelf 12" x 12"
Plastic Surface
#602712



Pivot Ledge 8" x 6"
#602508



For use with Eclipse™ Horizontal Equipment Rail # 050453
And F Type Eclipse™ Equipment Rail # 050469

Utility Basket Divider
4" Deep Baskets
#211885-04

Plexiglass Basket Dividers provide organization without sacrificing visibility



Utility Basket Divider
7" Deep Baskets
#211885-07

Plexiglass Basket Dividers provide organization without sacrificing visibility



Please call HSI for Additional Size Options

Eclipse™ Horizontal Equipment Rail Hygiene Support



SharpSmart/ Soap/ Sanitizer Mounting Bracket
Clamp On
#604102 (shown)
#604200

Softpull/ Bobrick Paper Towel Dispenser Mount
Clamp On
#604500



Single Glove Box Holder
Rapid Mount
#614000

Single Glove Box Holder
Clamp On
#604000

Double Glove Box Holder
Rapid Mount
#614001

Double Glove Box Holder
Clamp On
#604001



Triple Glove Box Holder
Rapid Mount
#614002

Triple Glove Box Holder
Clamp On
#604002

Waste Basket Holder
Clamp On
#604601





Wipes Dispenser Mount
Clamp On
#604201

For use with Eclipse™ Horizontal Equipment Rail # 050453
And F Type Eclipse™ Equipment Rail # 050469



Eclipse™ Horizontal Equipment Rail Patient Support



Single IV Hook, 18"
Clamp On
#605201

Double IV Hook, 28"
Clamp On
605202

IV Pole, 3-Hooks
Clamp On
#605000 – 12" Pole
#605001 – 24" Pole with 18" extension (shown)



Infusion Support, 3-Hooks
Clamp On
#605104 – 30" Pole with 27" extension

Infusion Support, 4-Hooks
Clamp On
#605102 - 30" Pole with 27" extension

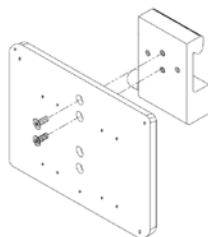


Infusion Support, Dual 6-Hooks
Clamp On
#605105 - 30" Poles with 27" extension

Infusion Support, Dual 8-Hooks
Clamp On
#605103 - 30" Poles with 27" extension



Universal Mounting Bracket
Clamp On
#606101
Accepts both Sphygmomanometers and Thermometers



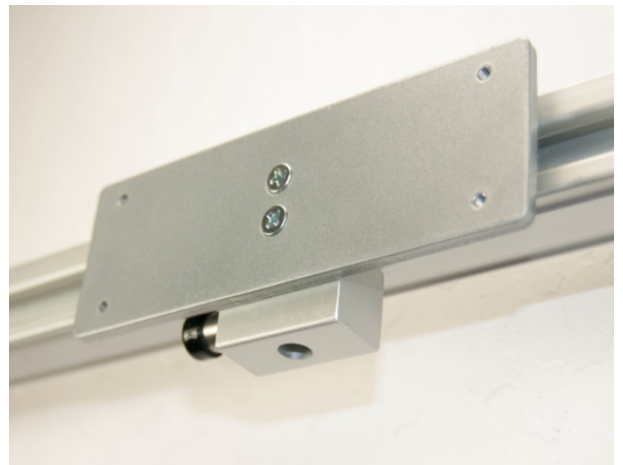
Sphygmomanometer Basket
Clamp On
#606104





Sphygmomanometer, Aneroid with Cuff Basket
#909730

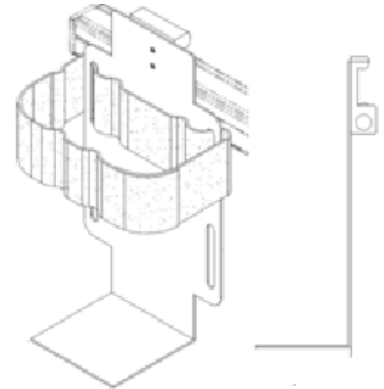
Ophthalmoscope Mount, Rigid
Clamp On
#606200



Ophthalmoscope Mount, Swivel
Clamp On
#606200



Universal Sharps Container Holder w/Velcro Strap
Clamp On
#604101



Sharpsmart/ Soap/ Sanitizer Mounting Bracket
Clamp On
#604102 (shown)
#604200

Mounting plates for use with; Daniels Sharpsmart Sharps Containers

Vacuum Bottle Slide
Rapid Mount (shown)
#613600

Vacuum Bottle Slide
Clamp On
#603600





Blender Bracket
Rapid Mount
#613601

Blender Bracket
Clamp On (shown)
#603601

Resuscitation/Ambu Bag Holder
Rapid Mount
#613300

Resuscitation/Ambu Bag Holder
Clamp On (shown)
#603300



Eclipse™ Horizontal Equipment Rail Organizational Support



Catheter Clip Assembly
Rapid Mount
#613400

Catheter Clip Assembly
Clamp On
#603400

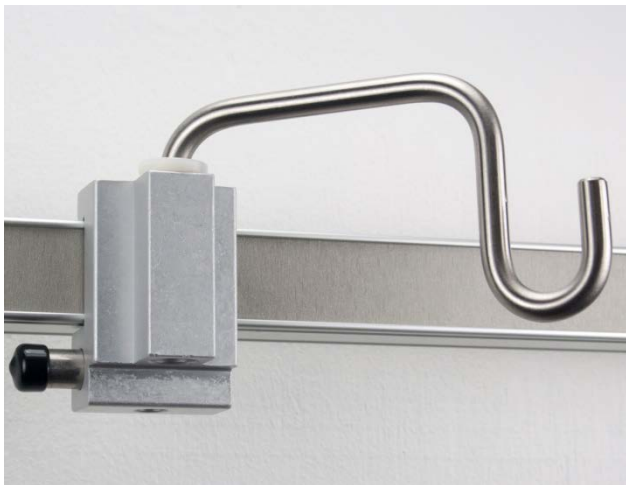
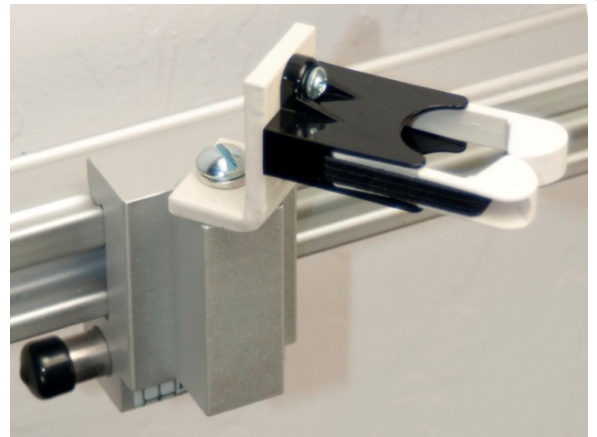
Utility Mounting Posts
Clamp On
#603504 – 4" Post (shown)
#603505 – 7" Post
#603506 – 10" Post



Cord Wrap
Rapid Mount
#613908 (shown)

Cord Wrap
Clamp On
#603908

Hose Clip Assembly
Clamp On
#603202 - Large
#603201 - Medium (shown)
#603200 - Small



Utility Hook, 5"
Clamp On
#603500

J Hook, Single
Clamp On
#603503





Marker Board, Dry Erase
Rapid Mount
#613904

Marker Board, Dry Erase
Clamp On
#603904 (shown)

Patient Information Holder
Rapid Mount
#613100

Patient Information Holder
Clamp On
#603100 (shown)

