



# HYPERION

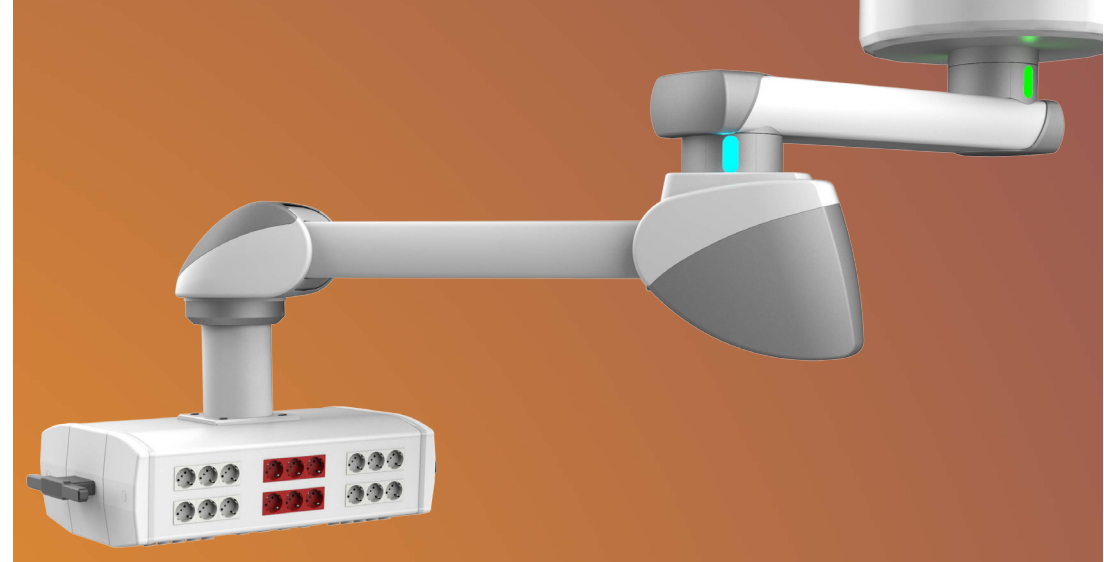
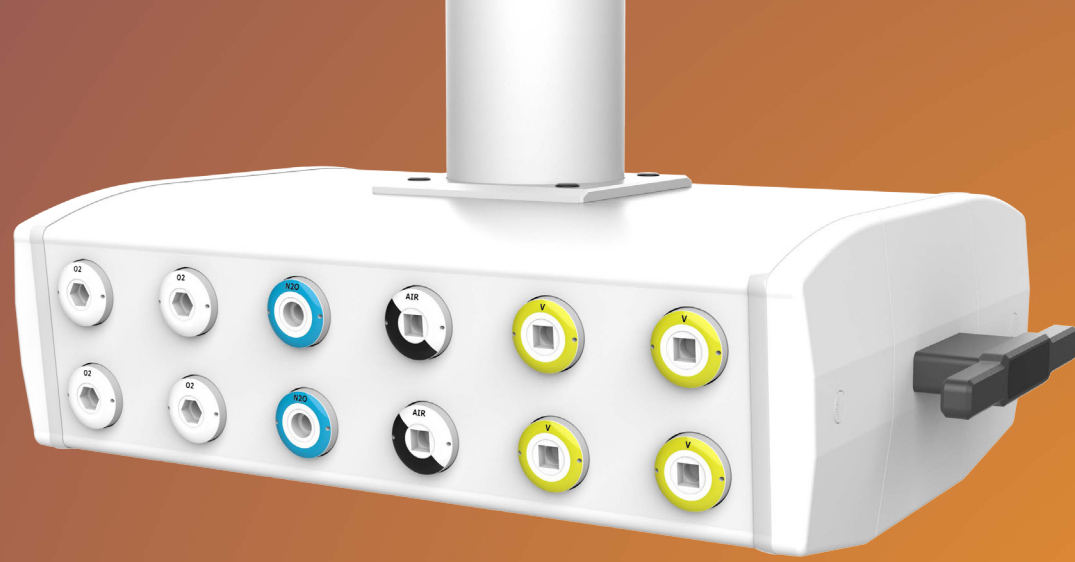
Horizontal  
Service Head



750 Garcia Ave. | since 1970, earning  
Pittsburg, CA 94565 | our clients' trust  
**Phone:** +1.925.427.7800 | by delivering the  
**Fax:** +1.925.427.0800 | right product on time

**Email:** [info@HSIbooms.com](mailto:info@HSIbooms.com)

**Web:** [www.HSIbooms.com](http://www.HSIbooms.com)



## EVERYTHING YOU NEED IN A COMPACT PACKAGE, ALL WITH FUTURE-READY VERSATILITY

### EXTENSIVE COVERAGE, SMALL FOOTPRINT

The **Hyperion Horizontal Service Head** packs wide-ranging functionality into a slim system perfect for crowded and compact ICU and OR spaces. Equipped with a customizable formation of electrical receptacles, gas outlets, and low voltage, the **Hyperion** can connect to all of the necessary equipment with no wasted space.

The **Hyperion** comes compatible with a range of accessories and can be mounted across the entire line of **Cygnus Boom Arms** for maximum customization. The **Hyperion's** vast utility allows it to serve any ICU or OR, from the smallest to the largest, and provide healthcare professionals with the tools they need to care for their patients.

### ADAPTABILITY TO MEET ANY CHALLENGE

The **Hyperion** offers a range of features that will maintain its efficacy no matter what the future has in store. The **Hyperion** is specially adaptable and reconfigurable to keep up with your facility's changing needs and changing technology.

The **Hyperion** can be configured with blanks, conveniently allowing for future equipment additions.

With a side-mounted equipment rail and optional vertical shelving units, the **Hyperion** can support any accessories and allows for quick and easy accessory changes.

### UNPARALLELED ORGANIZATION

- Contain cables and hoses within the boom arm and service head to prevent tangles and messes
- Add the cable management box to store excess supply lines and prevent tripping hazards
- Attach shelves and drawers for convenient storage and work space

### MAXIMIZED FLOOR SPACE

- Slim design allows for parking overhead and maximizing head room
- Keep services lines and equipment on the shelving units to open up space
- Improve cleaning and patient turnover workflows by removing hazards and obstacles

### CONVENIENT STORAGE AND ACCESSORIES

- Deploy Multi-Function Rack with 360 lbs load capacity
- Mount shelves, drawers, and IV racks for additional storage and organization
- Attach lights, atmospheric sound systems, and patient monitors for efficient and pleasing work environments

### DEVICE LIFTER

- Utilize a larger base and motorized vertical movement
- Raise anesthesia machines when not in use to clear space
- Facilitate simplified storage of heavy equipment

