



**HSI offers Patient Support accessories and secondary equipment including IV and Infusion Support, Sharps Mounts, Suction Canister brackets, Sphygmomanometer and more. Items are compatible with Ohio, Hill-Rom, Amico, Modular, Paladin, Eastern Rail, Nexxspan and Fairfield rails.**



Single IV Hook, 18"  
Clamp On  
#605201

For use with Eclipse™ Horizontal Equipment Rail # 050453  
And F Type Eclipse™ Equipment Rail # 050469

Single IV Hook, 18"  
MA Rail Mount  
#705201

For use with MA Horizontal Equipment Rail # 050443



Single IV Hook, 18"  
Unimount  
#505201

For use with Unimount™ Vertical Equipment Track # 050466

Double IV Hook, 28"  
Clamp On  
# 605202

For use with Eclipse™ Horizontal Equipment Rail # 050453  
And F Type Eclipse™ Equipment Rail # 050469

Double IV Hook, 28"  
MA Rail Mount  
#705201

For use with MA Horizontal Equipment Rail # 050443

Double IV Hook, 28"  
Unimount  
#505202

For use with Unimount™ Vertical Equipment Track # 050466





IV Pole, 3-Hooks  
Clamp On  
#605000 – 12" Pole  
#605001 – 24" Pole with 18" extension (shown)

For use with Eclipse™ Horizontal Equipment Rail # 050453  
And F Type Eclipse™ Equipment Rail # 050469

IV Pole, 3-Hooks  
MA Rail Mount  
#705000 – 12" Extension  
#705001 – 24" Extension

For use with MA Horizontal Equipment Rail # 050443



IV Pole, 3-Hooks  
Unimount™  
#505000 – 12" Pole (shown)  
#505001 – 24" Pole with 18" extension

For use with Unimount™ Vertical Equipment Track # 050466



## Infusion Support System, Single Patient Support

### Infusion Support, 4-Hooks Clamp On

#605102 - 30" Pole with 27" extension

For use with Eclipse™ Horizontal Equipment Rail # 050453  
And F Type Eclipse™ Equipment Rail # 050469

### Infusion Support, 4-Hooks Unimount

#505102 - 30" Pole with 27" extension

For use with Unimount™ Vertical Equipment Track # 050466



### Infusion Support, 3-Hooks Clamp On

#605104 - 30" Pole with 27" extension

For use with Eclipse™ Horizontal Equipment Rail # 050453  
And F Type Eclipse™ Equipment Rail # 050469

### Infusion Support, 3-Hooks Unimount

#505104 - 30" Pole with 27" extension

For use with Unimount™ Vertical Equipment Track # 050466



## Infusion Support System, Dual Patient Support

### Infusion Support, Dual 8-Hooks Clamp On

#605103 - 30" Poles with 27" extension

For use with Eclipse™ Horizontal Equipment Rail #050453  
And F Type Eclipse™ Equipment Rail # 050469

### Infusion Support, Dual 8-Hooks Unimount

#505103 - 30" Poles with 27" extension

For use with Unimount™ Vertical Equipment Track # 050466



### Infusion Support, Dual 6-Hooks Clamp On

#605105 - 30" Poles with 27" extension

For use with Eclipse™ Horizontal Equipment Rail #050453  
And F Type Eclipse™ Equipment Rail # 050469

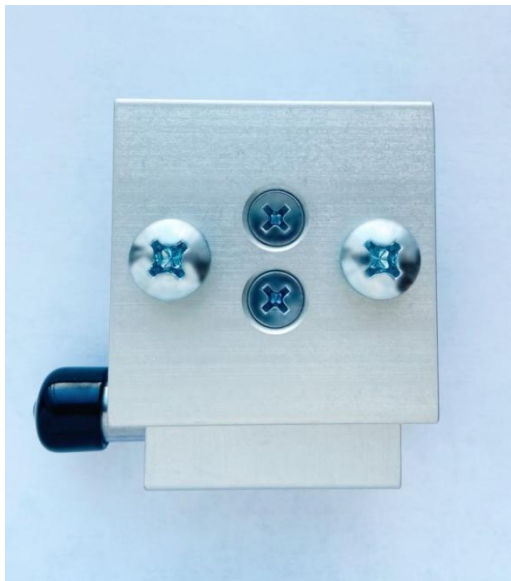
### Infusion Support, Dual 6-Hooks Unimount

#505105 - 30" Poles with 27" extension

For use with Unimount™ Vertical Equipment Track # 050466



## Exergen Thermometer Mounting Plate



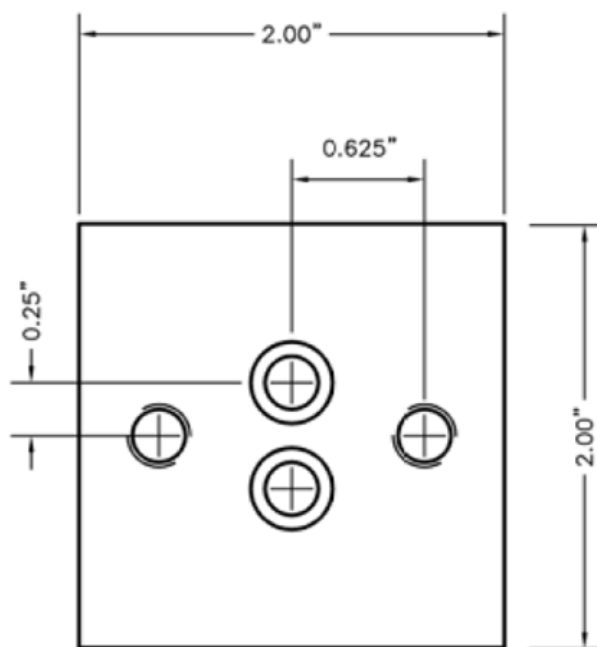
The **HSI Exergen Thermometer Mounting Plate** is designed for the mounting of the Exergen TAT-5000 Thermometer Temporal Scanner.

### Features

- Anodized Aluminum Mounting Plate
- Approx. Mounting Plate Dimensions  
2" Width x 2" Height x 0.25" Depth
- Available to mount to various Equipment Rails

### Ordering Information

Description	Part Number
Eclipse Rail Mounted	606106
MA Rail Mounted	706106
Ohio Rail Mounted	806106

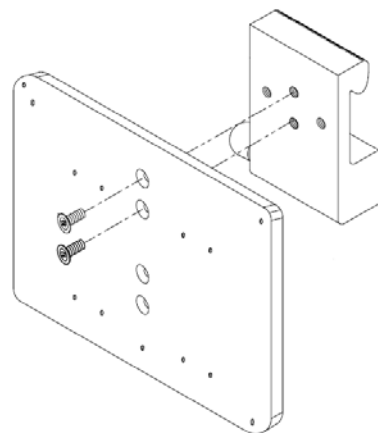


## Sphyg/Thermometer Mounts

### Patient Support

#### Universal Mounting Bracket Clamp On #606101

Accepts Sphygmomanometers and Thermometers  
For use with Eclipse™ Horizontal Equipment Rail # 050453  
And F Type Eclipse™ Equipment Rail # 050469



#### Universal Mounting Bracket MA Rail Mount #706101

Accepts Sphygmomanometers and Thermometers  
For use with MA Horizontal Equipment Rail #050433

#### Universal Mounting Bracket Ohio Rail Mount #806101

Accepts Sphygmomanometers and Thermometers  
For use with Ohio/Ohmeda Equipment Rail # 050511



## Sphygmomanometer Baskets

### Patient Support

#### Sphygmomanometer Basket Clamp On #606104

For use with Eclipse™ Horizontal Equipment Rail # 050453  
And F Type Eclipse™ Equipment Rail # 050469



#### Sphygmomanometer Basket MA Rail Mount #706104

For use with MA Horizontal Equipment Rail # 050443

#### Sphygmomanometer Basket Ohio Rail Mount #806104

For use with Ohio/Ohmeda Horizontal Equipment Rail #050511



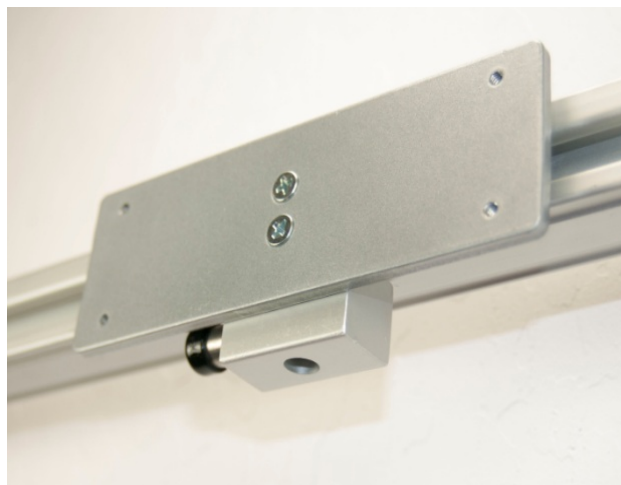
#### Sphygmomanometer, Aneroid with Cuff Basket #909730

Available for mounting to all HSI horizontal rails



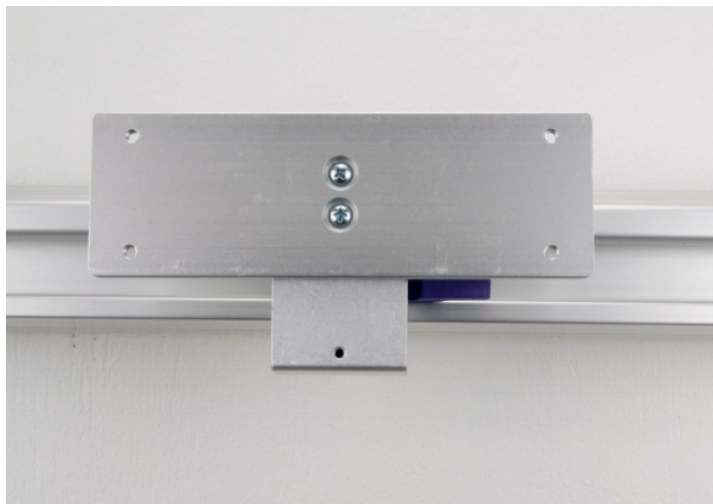
**Ophthalmoscope Mount  
Clamp On  
#606200**

For use with Eclipse™ Horizontal Equipment Rail # 050453  
And F Type Eclipse™ Equipment Rail # 050469



**Ophthalmoscope Mount  
MA Rail Mount  
#706200**

For use with MA Horizontal Equipment Rail # 050443



**Ophthalmoscope Mount  
Ohio Rail Mount  
#806200**

For use with Ohio/Ohmeda Horizontal Equipment Rail  
#050511



# Ophthalmoscope Mounts

## Swivel Patient Support

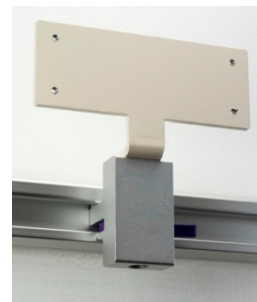
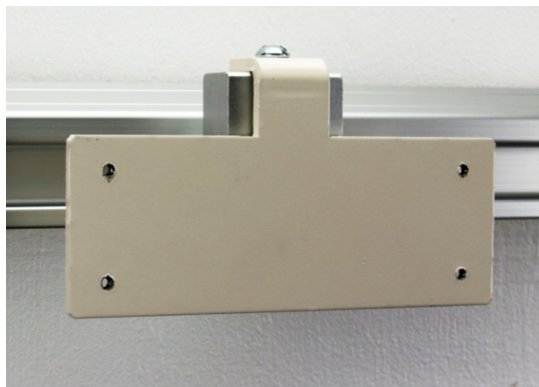


Ophthalmoscope Mount  
Clamp On  
#606200

For use with Eclipse™ Horizontal Equipment Rail  
# 050453  
And F Type Eclipse™ Equipment Rail # 050469

Ophthalmoscope Mount  
MA Rail Mount  
#706200

For use with MA Horizontal Equipment Rail  
# 050443



Ophthalmoscope Mount  
Unimount  
#506200

For use with Unimount™ Vertical Equipment  
Track #050466

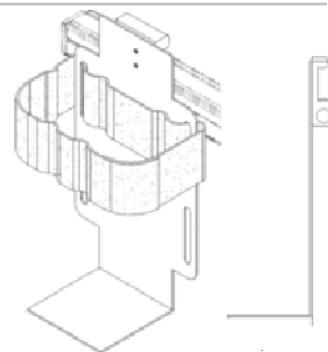
\*Ophthalmoscope Swivel mounts are available in two configurations for ease of use

**Sharps Container Holder  
Rapid Mount  
#614101**

For use with Eclipse™ Horizontal Equipment Rail #050453

**Sharps Container Holder  
Clamp On  
#604101**

For use with Eclipse™ Horizontal Equipment Rail # 050453  
And F Type Eclipse™ Equipment Rail # 050469



**Sharps Container Holder  
MA Rail Mount  
#704101**

For use with MA Horizontal Equipment Rail # 050443

**Sharps Container Holder  
Ohio Rail Mount  
# 804101**

For use with Ohio/Ohmeda Horizontal Equipment Rail #050511



**Sharps Container Holder  
Unimount  
#504101**

For use with Unimount™ Vertical Equipment Track #050466



Vacuum Bottle Slide  
Rapid Mount  
#613600

For use with Eclipse™ Horizontal Equipment Rail #050453

Vacuum Bottle Slide  
Clamp On  
#603600

For use with Eclipse™ Horizontal Equipment Rail # 050453  
And F Type Eclipse™ Equipment Rail # 050469



Vacuum Bottle Slide  
MA Rail Mount  
#703600

For use with MA Horizontal Equipment Rail # 050443

Vacuum Bottle Slide  
Ohio Rail Mount  
# 803600

For use with Ohio/Ohmeda Horizontal Equipment Rail #050511



Vacuum Bottle Slide  
Unimount  
#503600

For use with Unimount™ Vertical Equipment Track #050466



Blender Bracket  
Rapid Mount  
#613601

For use with Eclipse™ Horizontal Equipment Rail #050453

Blender Bracket  
Clamp On  
#603601

For use with Eclipse™ Horizontal Equipment Rail # 050453  
And F Type Eclipse™ Equipment Rail # 050469



Blender Bracket  
MA Rail Mount  
#703601

For use with MA Horizontal Equipment Rail # 050443

Blender Bracket  
Ohio Rail Mount  
# 803601

For use with Ohio/Ohmeda Horizontal Equipment Rail #050511



Blender Bracket  
Unimount  
#503601

For use with Unimount™ Vertical Equipment Track #050466





Resuscitation/Ambu Bag Holder  
Rapid Mount  
#613300

For use with Eclipse™ Horizontal Equipment Rail #050453

Resuscitation/Ambu Bag Holder  
Clamp On  
#603300

For use with Eclipse™ Horizontal Equipment Rail # 050453  
And F Type Eclipse™ Equipment Rail # 050469



Resuscitation/Ambu Bag Holder  
MA Rail Mount  
#703300

For use with MA Horizontal Equipment Rail # 050443

Resuscitation/Ambu Bag Holder  
Ohio Rail Mount  
# 803300

For use with Ohio/Ohmeda Horizontal Equipment Rail #050511



Resuscitation/Ambu Bag Holder  
Unimount  
#503300

For use with Unimount™ Vertical Equipment Track #050466